



# Mapping Application



Copyright © 2003 DaimlerChrysler AG.

DaimlerChrysler AG

HPC Z400

D-70546 Stuttgart

<http://www.fleetboard.com>

No part of this documentation may be copied or reproduced without written permission

Telligent is a registered trademark of DaimlerChrysler AG. Windows and Windows NT are registered trademarks of Microsoft Corporation. Acrobat is a trademark of Adobe Systems Incorporated.

Other company, trademark and product names, which are not expressly listed here, are trademarks or registered trademarks of their respective owners and are protected by copyright law.

#### Imprint

This documentation was compiled by ExperTeach GmbH in co-operation with DaimlerChrysler Services FleetBoard GmbH.

Status: 17 September, 2003

Example



**Table of Contents**

**Before you begin ...**

**Preface** ..... **VI**

    What Is Mapping? ..... **VI**

    Further FleetBoard Modules ..... **VI**

**Accessing FleetBoard Mapping** ..... **VI**

    Purchasing FleetBoard ..... **VI**

    System Requirements ..... **VI**

    Required Browser Settings ..... **VI**

**About this Documentation** ..... **VI**

    Notation and Symbols ..... **VI**

    Important Information ..... **VII**

    Further Documentation ..... **VII**

    Contacting FleetBoard Support ..... **VIII**

**1 Searching on the Map**

**Searching on the Map** ..... **1-2**

**How to Search for Cities** ..... **1-3**

**Index**

Example



# Chapter

## Before you begin ...

Preface .....	VI
Accessing FleetBoard Mapping .....	VI
About this Documentation .....	VI

Example



## **Preface**

### **What Is Mapping?**

### **Further FleetBoard Modules**

## **Accessing FleetBoard Mapping**

### **Purchasing FleetBoard**

### **System Requirements**

### **Required Browser Settings**

## **About this Documentation**

This documentation refers to version 3.0 and higher of the FleetBoard Mapping module.

## **Notation and Symbols**

The following notation is used:

- References to other manuals, chapters, and sections are displayed on the screen in [blue](#).

Example:

Refer to [section Required Browser Settings](#).

- Navigation paths, buttons, text fields within the Internet interface, system messages, etc. are represented in *italics*.

Example:

Click the *Help* button.

- The parts of a navigation path are separated from each other via ">".

Example:

Launch Netscape Navigator using *Start > Programs > Netscape > Netscape Navigator*.

## Important Information

Important information is indicated by symbols in the margin, which have the following meaning:



Note: Contains important general or additional information on a specific topic.



Prerequisite: Defines requirements which have to be fulfilled before you can carry out the next steps.

## Further Documentation

You can find further information in the manuals on Trucking, Transporting, and Customer Administration, as well as in the online help provided with these modules.

## Contacting FleetBoard Support

If you have further questions or require information on our products, please feel free to contact FleetBoard support. To do so, click the *Support* button from within the FleetBoard interface.

Example



# Chapter 1

## Searching on the Map

Searching on the Map.....	1-2
How to Search for Cities .....	1-3
How to Search for Streets .....	3-3
How to Search for Other Map Objects .....	3-4

EXAMPLE



## Searching on the Map

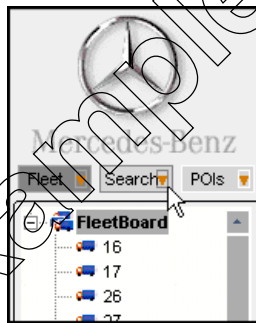
In Mapping, you can search for:

- Cities
- Streets
- Other map objects

You can limit your search to the map clipping currently displayed or choose to search the entire map data.

Launching the Search Mode

To launch the search mode, click the *Search* button at the top of the navigation section.



The search mask appears.



You can now start your search on the map.

Searching the  
Current  
Clipping

If you want to restrict your search to the map clipping currently displayed, the *Current clipping only* check box needs to be checked during the search.

Searching the  
Entire Map Data

If you want to extend your search to the entire map data available, you need to uncheck the *Current clipping only* check box by clicking it. The check mark will then disappear.

## How to Search for Cities

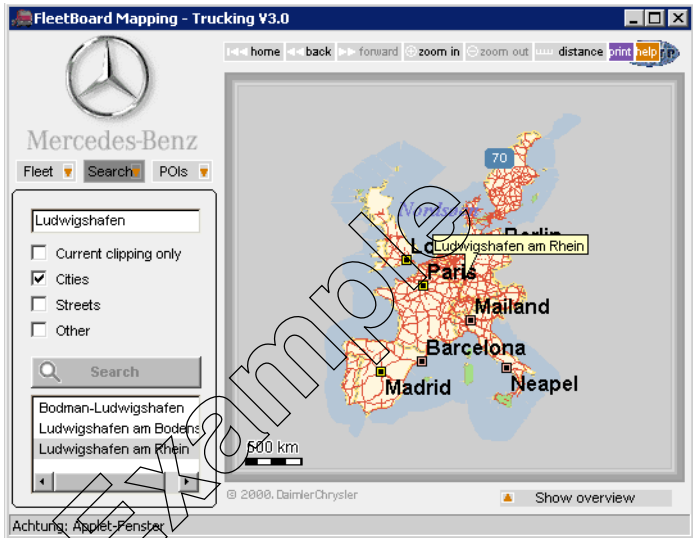
1. Type your search word into the text field.  
Example: Maidenhead.



Note: As all names on the map are in uppercase, some foreign special characters have to be transcribed. For instance, the German “ß” has to be replaced by “ss”.  
Example: *Grosswallstadt* instead of *Großwallstadt*.

2. Make sure that the *Cities* check box is checked.
3. If you don't want your search to extend to streets and other map objects, you should uncheck those check boxes by clicking them. The check marks will then disappear.
4. Select whether you want to look for your search word in the current clipping only or in the entire map data.
5. Click the *Search* button.

The cities that have been found will be displayed in the results area. If several search results are suggested in the results area, you may have to try them out one by one until you find the city you were looking for.



**B**

Before you begin ... [V](#)  
Browser settings [VI](#)

**C**

Current clipping  
Search [1-3](#)

**E**

Entire map data  
Search [1-3](#)

**F**

FleetBoard [VI](#)  
Contacting Support [VIII](#)  
Further modules [VI](#)  
Purchasing [VI](#)

**I**

Important information [VIH](#)  
Information  
Important [VII](#)

**M**

Mapping [VI](#)  
Access [VI](#)

**N**

Notation [VI](#)  
Notation and symbols [VI](#)

**P**

Purchasing FleetBoard [VI](#)

**S**

Search [1-2](#)  
Cities [1-3](#)  
Current clipping only [1-3](#)  
System requirements [VI](#)

Example

If you require help or further information, please contact the FleetBoard hotline.  
You can find the current contact on the FleetBoard user Web site under Support.

Status: 17 September, 2003, Subject to modifications.  
DaimlerChrysler Services FleetBoard GmbH, Berlin  
[www.FleetBoard.com](http://www.FleetBoard.com)